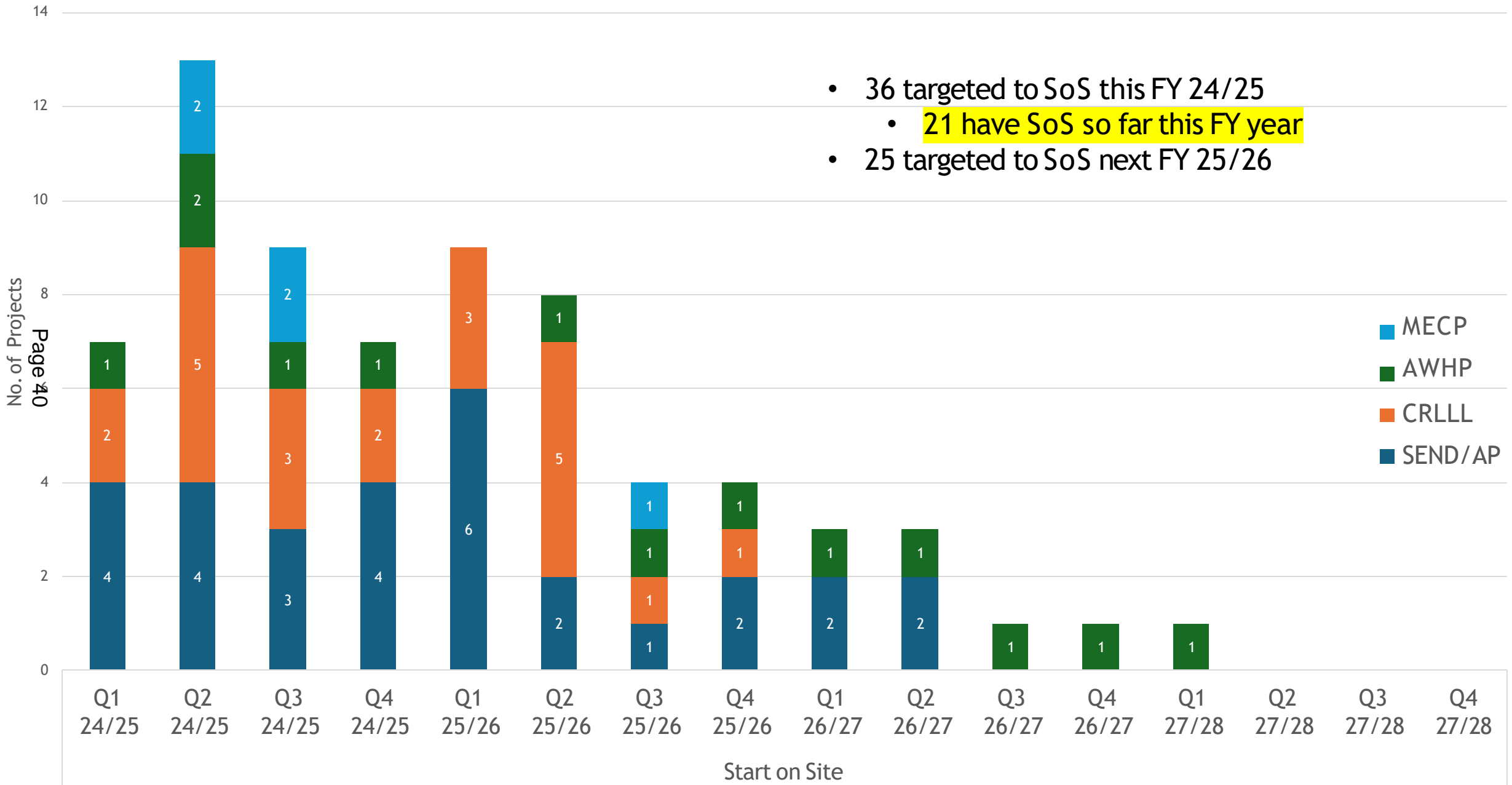


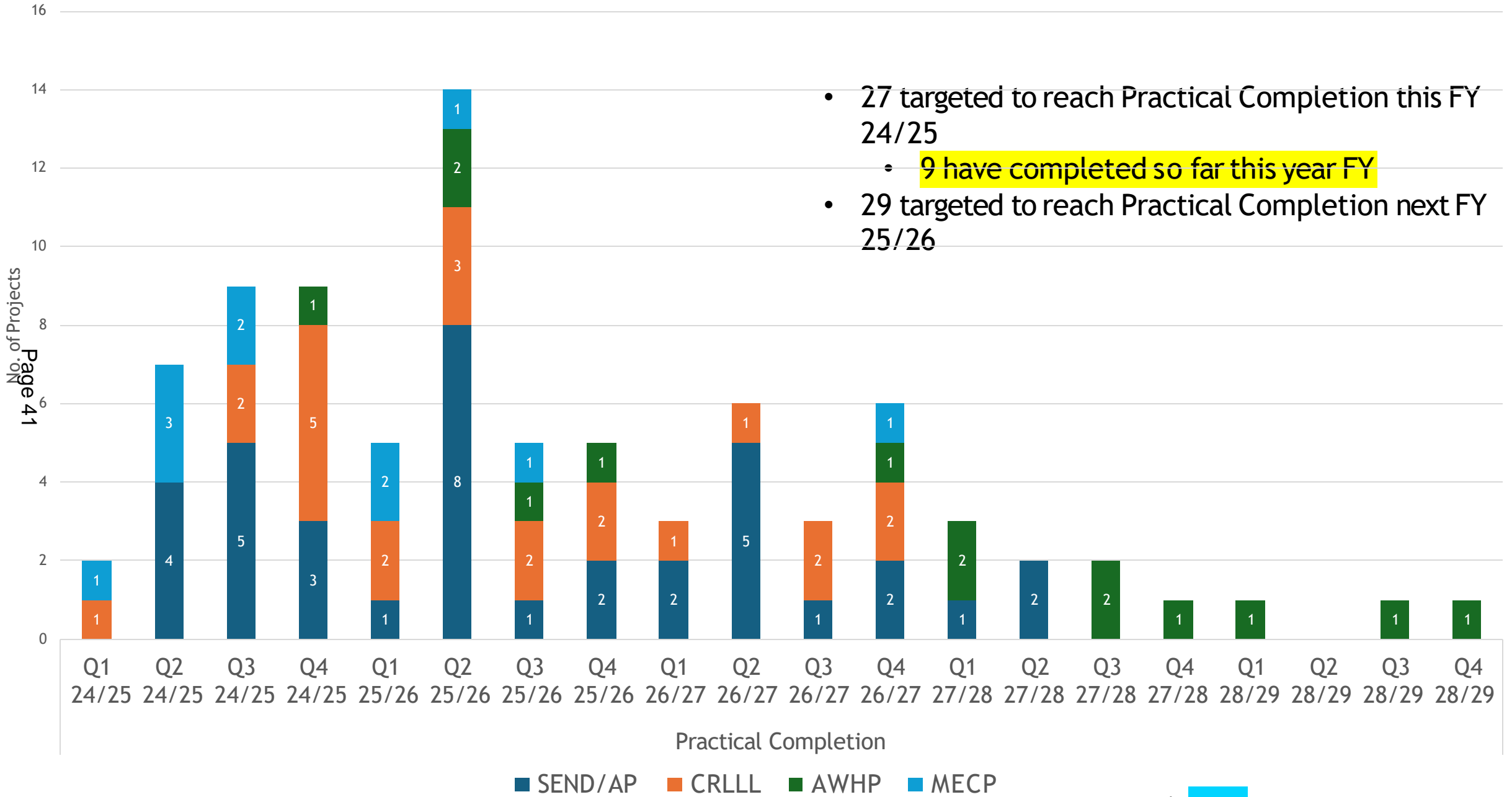
**Cabinet Member for Property, Waste and Infrastructure  
Capital Projects Update October 2024**

# Capital Projects Start on Site (Oct 24 Data)



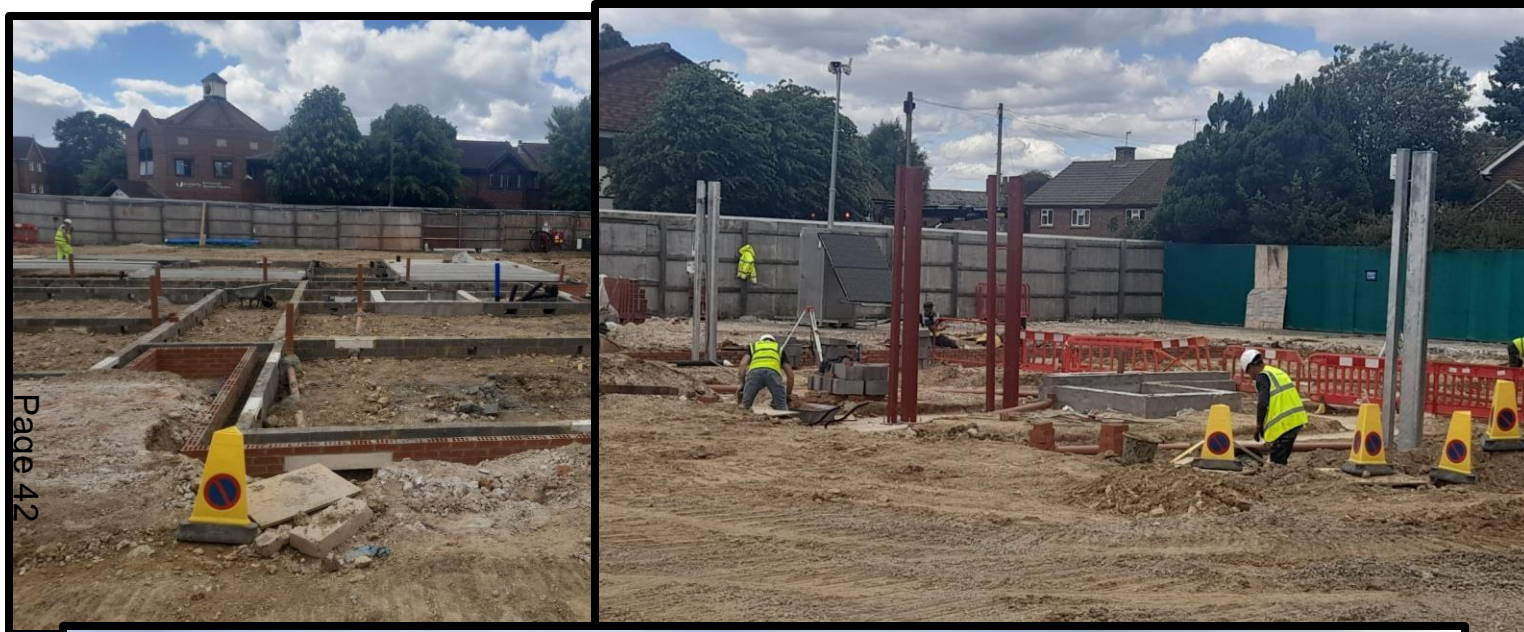
- 36 targeted to SoS this FY 24/25
  - 21 have SoS so far this FY year
- 25 targeted to SoS next FY 25/26

# Capital Projects Practical Completions (Oct 24 Data)



- 27 targeted to reach Practical Completion this FY 24/25
  - 9 have completed so far this year FY
- 29 targeted to reach Practical Completion next FY 25/26

# Right Homes, Right Support AWHP Key Achievements Highlights



Page 42



## Supported Independent Living Former Horley Library Reigate s Banstead Borough

Contractor : Neilcott Construction limited

Start on Site: May 2024

Target Practical Completion: July 2025

**Purpose:** The scheme is designed to allow working adults with a learning disability and/or autism to maintain and/or develop their independence and be part of the community. The scheme includes 2 x 5 bed town houses and 6 x 1-bedroom flats as part of Surrey County Council's "Right Homes, Right Support" strategy.

Cost £8.24m

# Right Homes, Right Support AWP Key Achievements Highlights



## Short Breaks Lakers Woking Borough

Contractor : Neilcott Construction Limited

Start on Site: Feb 2024

Target Practical Completion: Feb 2025

Purpose: High quality Short Breaks accommodation for working age adults with learning disabilities and/or autism. The scheme includes 8 ensuite bedrooms and communal facilities as part of Surrey County Council's "Right Homes, Right Support" strategy.

Cost £5.77m

# Right Homes, Right Support AWP Key Achievements Highlights



Page 44

## Supported Independent Living Former Manor School Woking Borough

Contractor : Neilcott Construction Limited

Start on Site: August 2024

Target Practical Completion: Sept 2025

**Purpose:** Supported Independent Living accommodation in the form of two 5-bedroom townhouses and six 1-bedroom flats. The development will provide homes for sixteen working-age adults with learning disabilities and/or autism, as part of Surrey County Council’s “Right Homes, Right Support” strategy.

Cost £8.5m

# Right Homes, Right Support AWHP Key Achievements Highlights



## Extra Care Housing Colebrook Reigate s Banstead Borough

**Contractor :** Goody Demolition.  
**Main Contractor** TBA

**Target Start on Site:** Under DBFO, Main Contractor on Jan 2027.

**Target Practical Completion:** Demolitions to complete Oct 2024.  
Main construction proposed completion with DBFO Oct 2028.

**Purpose:** Colebrook Day Centre for independent living for adults with a spectrum of care needs. Outline planning consent for indicatively 120 units scheduled for October 24 Planning Committee. This is part of Surrey County Council's "Right Homes, Right Support" strategy.  
**Cost** £3.1m

# Right Homes, Right Support AWP Key Achievements Highlights

## Extra Care Housing Birchlands Runnymede Borough

**Contractor :** Goody Demolition.  
**Main Contractor** TBA

**Target Start on Site:** Main contractor proposed start on Site under DBFO Oct 2026.

**Target Practical Completion:** Demolitions completed. Main construction proposed completion with DBFO April 2028.

**Purpose:** Outline planning consent indicatively proposed 48 extra care apartments (45 x 1 bed, 3 x 2 bed) independent living for adults with a spectrum of care needs as part of Surrey County Council’s “Right Homes, Right Support” strategy.

**Cost** £3.1m





# Right Homes, Right Support AWP Key Achievements Highlights



## Extra Care Housing Orchard Court Tandridge District

**Contractor :** Goody Demolition.  
**Main Contractor** TBA

**Target Start on Site:** Main Contractor proposed Start on Site with DBFO arrangement April 2027

**Target Practical Completion:** Demolition completed; Main construction proposed completion with DBFO Oct 2028.

**Purpose:** Independent living for adults with a spectrum of care needs. Outline planning achieved. This is part of Surrey County Council's "Right Homes, Right Support" strategy.

**Cost** £3.1m

# Mainstream Schools Key Achievements Highlights



## Mainstream Education Woolmer Hill Secondary School Waverley Borough

**Contractor :** OCD Construction Ltd

**Completed:** September 2024 - currently in defects liability for 12 months.

**Purpose:** The Secondary school took on 900 additional pupils for Sept 2023 and therefore required additional supporting and teaching spaces. A new teaching block, Drama Studio C lift, food pod C replacement hard play area.

**Cost:** £7.5m

# Mainstream Schools Key Achievements Highlights



## Mainstream Education Bishop Wand Secondary School Spelthorne Borough

**Contractor :** MCS Construction

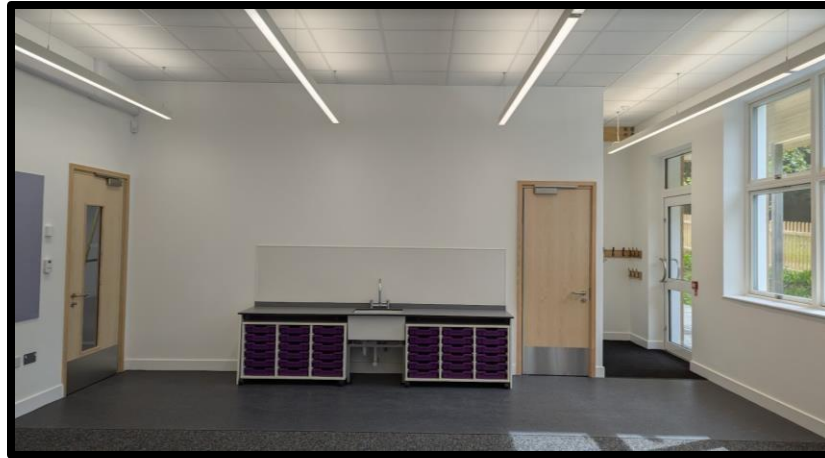
**Completed:** April 2024 currently in defects liability.

**Purpose:** New Dining, Classrooms and Science wing teaching block for 1 form extension. Highway works still to be completed.

**Cost:** £5.5m



# Mainstream Schools Key Achievements Highlights



**Mainstream Education  
St Peter s St Paul  
Primary School  
Tandridge District**

**Contractor:** EW Beard  
Construction

**Completed:** Sept 2024  
currently in defects liability.

**Purpose:** New Teaching Block  
for 120 new Places expansion  
to the existing school.

**Cost:** £4.5m

Page 10



# Corporate Parenting Key Achievements Highlights



## Corporate Parenting Children's Homes Walton s Epsom Shaw Family Contact Centre

Contractor : EW Beard Construction

### Completed:

Epsom April 2023

Walton May 2023

Shaw Family Contact Centre August 2023

Defects liability completed 2024.

**Purpose:** The new purpose-built homes C contact centre can accommodate up to ten children and young people between them at any one time, with rooms for overnight staff too.

**Cost** £5.5m rebuilding 2 Community Children's Homes C £1.8m Shaw Family Contact Centre.

# Corporate Parenting Key Achievements Highlights



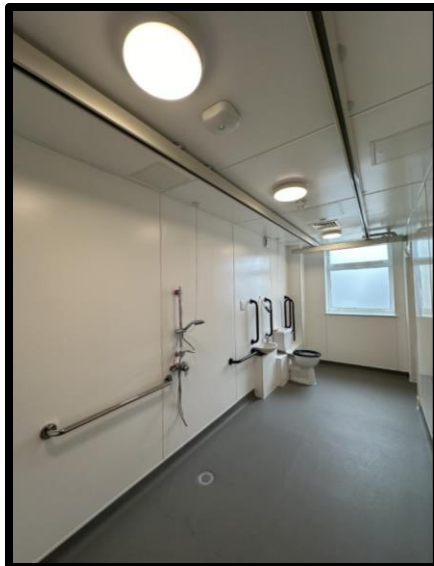
## Corporate Parenting Applewood Respite Centre Epsom and Ewell Borough

**Contractor:** EW Beard Construction

**Completed:** July 2024 currently in defects liability

**Purpose:** Short Breaks respite care home for children with disabilities and Learning difficulties. Refurbishment, upgrade and new side extension for larger kitchen facilities.

**Cost:** £1.6m



# Corporate Parenting Key Achievements Highlights



## Corporate Parenting Dorking Children's Home Mole Valley District

Contractor: Stepnell Limited

Commenced: September 2023

Proposed completion: October 2024

Purpose: New construction of a 6-bedroom children's home with a 3-bedroom annex to support specialist needs for children with Autism

Cost: £4.2m



Page 53

# Corporate Parenting Key Achievements Highlights



Page 54



## Corporate Parenting Faircroft Children's Home Elmbridge Borough

Contractor: Stepnell Limited

Commenced: July 2024

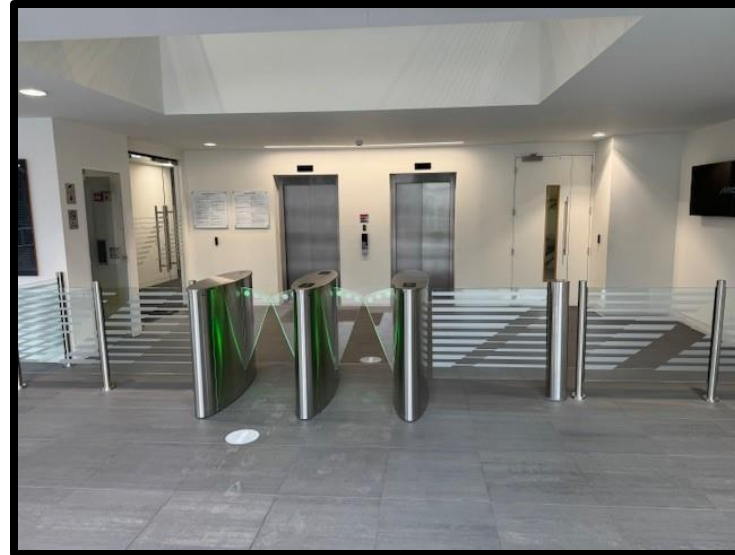
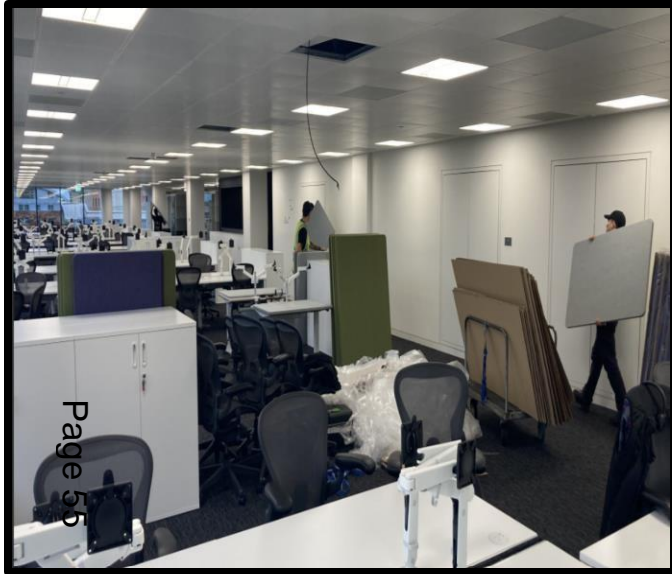
Proposed completion: May 2025

Purpose: New construction of a 6-bedroom children's home with a 3-bedroom annex.

Cost: £3.5m



# Corporate Resources Lifelong Learning Key Achievements Highlights



## Agile Programme Victoria Gate Woking Borough

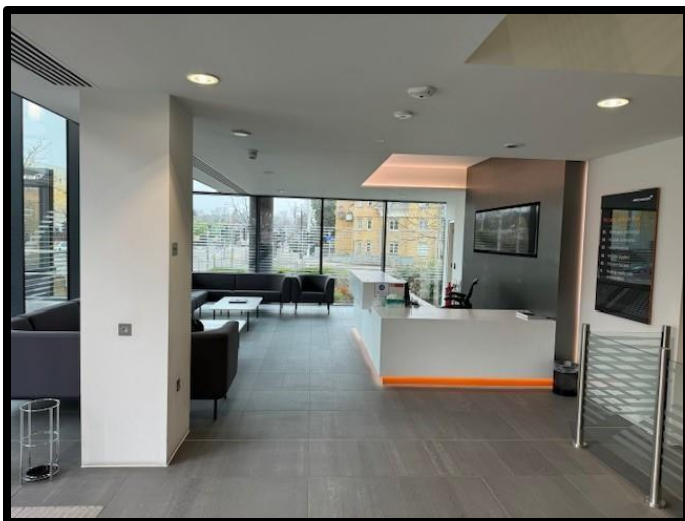
**Contractor:** Main contractor TBA currently In procurement

**Commencement:** Main contractor for structural works Phase 2 commences in Dec 24.

**Proposed completion:** Phase 1 construction works scheduled for PC on 7th October. Phase 2 currently targeted to complete in Spring 25.

**Purpose:** Site Works MEP C furniture fit out, structural work to include a lift from ground to basement level. Working to move around 2000 staff.

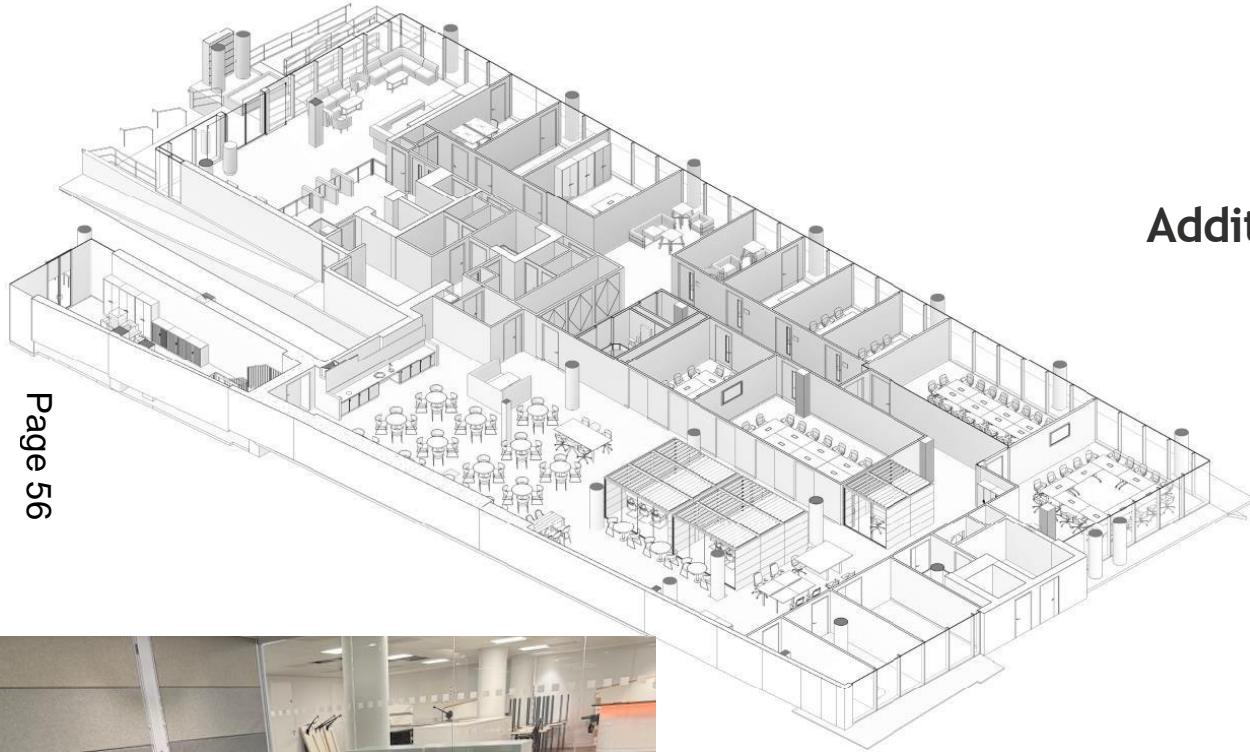
**Cost:** £6.5m (Endorsed by Property Panel to go to Capital Programme Panel Oct 24)



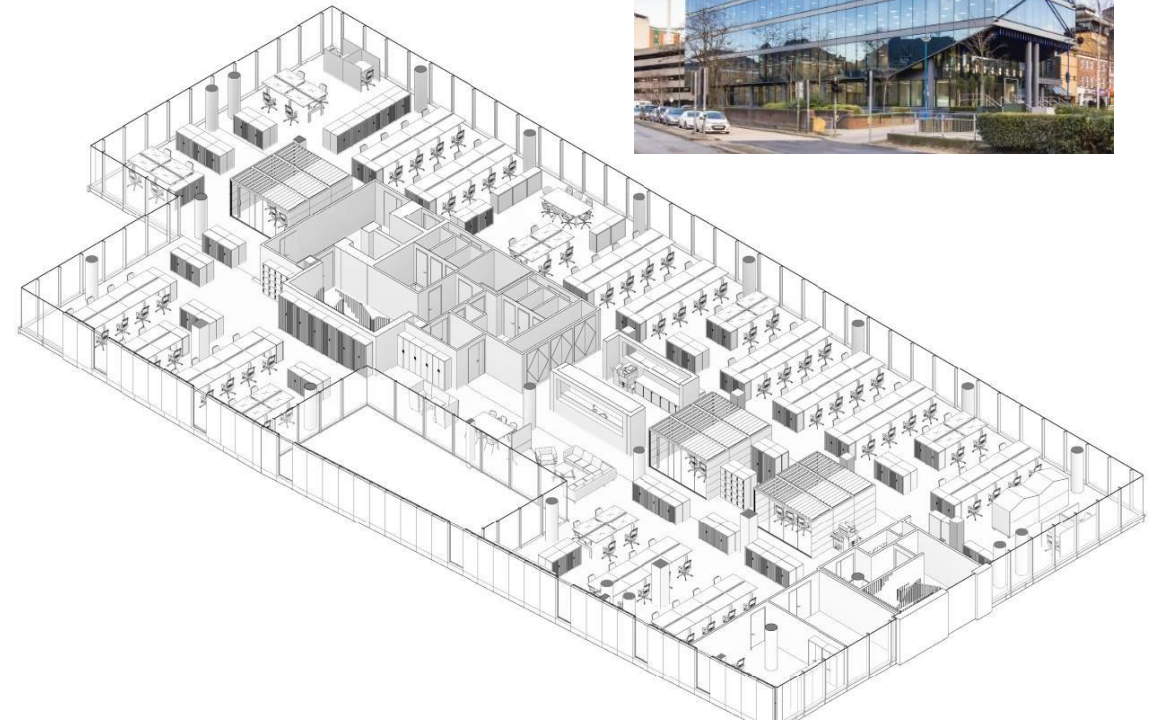
# Corporate Resources Lifelong Learning Key Achievements Highlights



**Agile Programme  
Victoria Gate  
Woking Borough  
Additional Photos s Layout**



Page 56

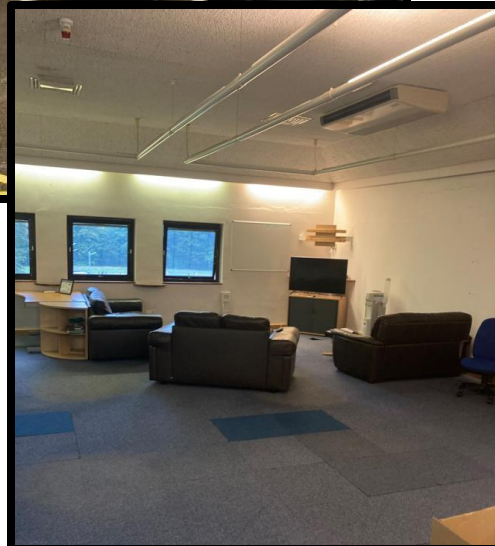


# Corporate Resources Lifelong Learning

## Key Achievements Highlights



Page 57



### Surrey Fire's Rescue Service Reigate Fire Station Reigate and Banstead Borough

**Contractor:** Neilcott Construction Limited

**Commencement:** October 2024 - decant completed

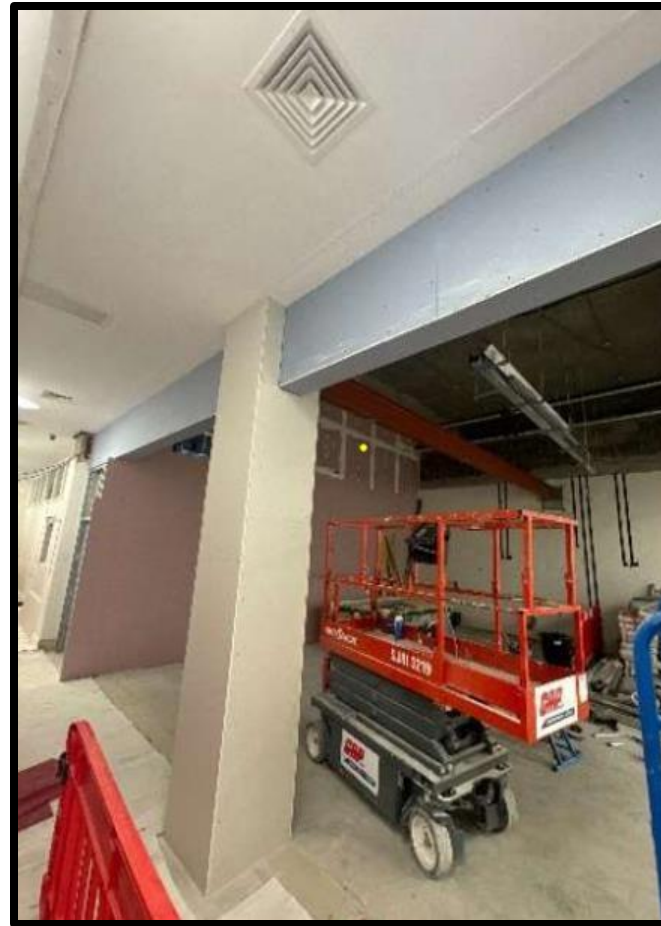
**Target completion:** October 2025

**Purpose:** Decant from temporary fire station (see photos) to temp facility to allow vacant possession. Redevelopment of fire station facilities.

**Cost:** £8.1m

# Corporate Resources Lifelong Learning

## Key Achievements Highlights



### Libraries Transformation Programme

#### Woking Library

#### Woking Borough

**Contractor:** Neilcott Construction Ltd

**Commencement:** July 2024

**Target completion:** December 2024

**Purpose:** Refurbish and enhance the existing library facilities.

**Cost:** £2.1m

# Corporate Resources Lifelong Learning

## Key Achievements Highlights

### Hubs Programme Weybridge Hub Elmbridge Borough

**Contractor:** Neilcott Construction Limited

**Commencement:** June 2024

**Target completion:** Phased Occupation from April 2025.

**Purpose:** The Weybridge Hub will include a modern library, a space for targeted youth support, accessible community spaces for hire and other commercially lettable space. External building refurbishment, expansion of ground floor and extension of rear courtyard and a full refit of all interiors.

**Cost:** £8.7m



# Corporate Resources Lifelong Learning

## Key Achievements Highlights



### Highway Depots Merrow Salt Barn Guildford Borough

Contractor: Ed Burton Contractors Ltd

Commencement: April 2024

Target completion: October 2024

**Purpose:** Construction of a new Salt Barn for Merrow Depot to store salt for the gritting of Surrey's busy roadways infrastructure. The barns are designed to keep the salt in perfect condition and the round structures ensure there is no wastage. Tall doorways to enable the off-loading of salt deliveries to take place within the barns.

**Cost:** £1.7m



# Corporate Resources Lifelong Learning

## Key Achievements Highlights



### Highway Depots Godstone Salt Barn Tandridge District

**Contractor:** Ed Burton Contractors Ltd

**Commencement:** August 2024

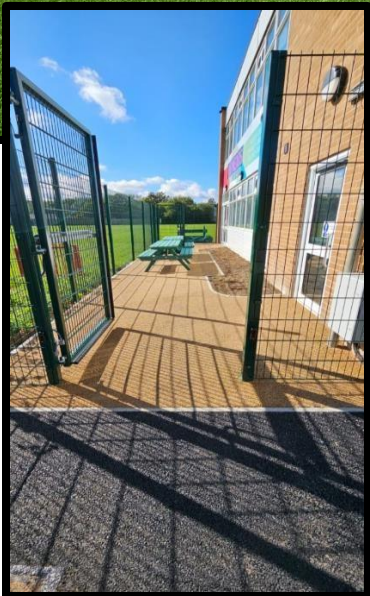
**Proposed completion:** March 2025

**Purpose:** Construction of a new Salt Barn for Godstone Depot to store salt for the gritting of Surrey's busy roadways infrastructure. The barns are designed to keep the salt in perfect condition and the round structures ensure there is no wastage. Tall doorways to enable the off-loading of salt deliveries to take place within the barns.

**Cost:** £2.5m



# SEND/Alternative Provision Key Achievements Highlights



**SEND Programme  
Philip Southcote  
Main Site s Hydrotherapy Pool  
Elmbridge Borough**

**Contractor:** Morgan Sindall

**Commencement:** October 2023

**Proposed completion:** February 2025

**Purpose:** Increased secondary provision by 1FE with 7 new classrooms and supporting spaces. Construction of a new block, demolition of existing modular C temporary accommodation. New staff car parking

**Cost:** £11.1m



# SEND/Alternative Provision Key Achievements Highlights



## SEND Programme Philip Southcote Satellite site Epsom s Ewell Borough

**Contractor:** Colours Construction Ltd

**Commencement:** May 2024

**Completion:** August 2024 now in 12 months defects liability period.

**Purpose:** Internal refurbishment and adaption of existing capacity for a new 20 place specialist satellite provision for Philip Southcote for children with Moderate Learning Difficulties (MLD)

**Cost:** £1.3m



# SEND/Alternative Provision Key Achievements Highlights



**SEND Programme  
St Matthews CofE School  
Reigate s Banstead Borough**

**Contractor:** TG Escapes Ltd

**Commencement:** Jan 2024

**Completion:** July 2024 currently in 12 months defects liability period.

**Purpose:** New build SEN Block extension for additional mainstream units for Autistic children.

**Cost:** £1.8m

# SEND/Alternative Provision Key Achievements Highlights



## SEND Programme Stepgates Community School Runnymede Borough

**Contractor:** TG Escapes

**Commencement:** March 2024

**Completion:** September 2024 - currently in 12-month defects liability period

**Purpose:** Remodel and refurbishment and new build extension of Stepgates community school for 8 additional mainstream SEN unit places (21 overall).

**Cost:** £2.6m

# SEND/Alternative Provision Key Achievements Highlights



## SEND Programme The Abbey School Waverley Borough

**Contractor:** OCD Construction Ltd

**Commencement:** August 2023

**Completion:** September 2024- currently in 12-month defects liability period

**Purpose:** Remodel and new build extension for permanent accommodation for 60 additional specialist school places for children aged 11-16 years with Moderate Learning Difficulties (MLD).

**Cost:** £7.4m

# SEND/Alternative Provision Key Achievements Highlights

Page 67



## Freemantles School Woking

**Contractor :** Morgan Sindall

**Completed:** October 2023, defects liability period to be completed end of October 2024

**Purpose:** Secondary C further education facility has expanded the school's accommodation by a total of 72 additional places for children with complex social communication needs.

**Cost** £16.1m

# SEND/Alternative Provision Key Achievements Highlights



## SEND Provision Freemantles School Satellite site Former Ripley Primary School Guildford Borough

**Contractor:** Colours Construction Ltd

**Completed:** August 2024, currently in 12-month defects liability period.

**Purpose:** Refurbishment and adaptation of the Former Ripley Primary School site to provide temporary satellite provision for Freemantles School creating 54 additional specialist school places for autistic children with complex needs.

**Cost** £0.9m